

Critter Line Guard Installation Instructions

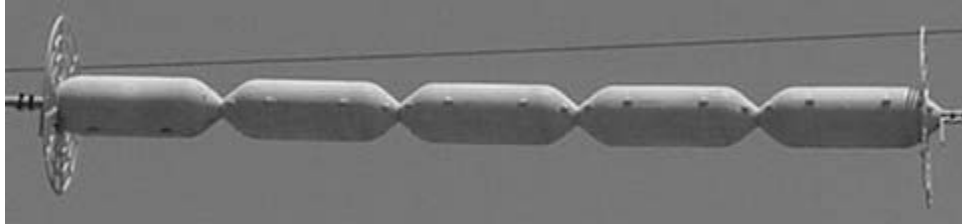


Figure 1
(Model # LG201)

Prior to installing this product please thoroughly review all the instructions contained in this document. The average installation time is 15 minutes per line or conductor. Critter Line Guards are made of quality U.V. resistant polypropylene. Failure to follow these installation instructions may result in premature product failure. Future problems can be avoided by following all the instructions listed below.

Product Placement:

- ❑ For substation applications place the Line Guard at least 5' outside the substation fence.
- ❑ For other installations, the Line Guard should be placed two feet out from the pole or standing structure.

Important Notes:

1. **To prevent separation of the Line Guard**, the “L” brackets (See Step 4) must be tightly secured to the line using the cable ties provided.
2. **To prevent separation of the wheel from the rollers**, the base of the wheel (See Step 6) must be secured with one cable tie where the roller and wheel meet. (See Figure 3)
3. Installation time can be decreased by snapping one side of each roller together on the ground.
4. Rollers will not separate after they are snapped together.
5. **This product shall be installed by qualified utility Line Technicians.**

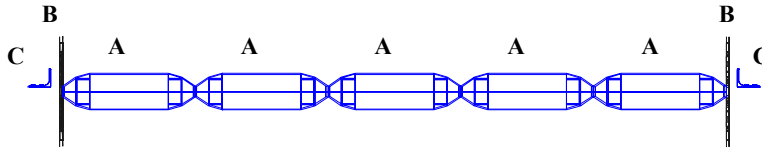


Figure 2

Installation Instructions:

Step 1: Material needed per installation (See Figure 2):

- Two “L” Brackets (Item C)
- Two wheels (Item B)
- Ten roller halves (Item A)
- Six cable ties.

Step 2: Verify the size of the line or conductor that the Critter Line Guard will be installed on. For line/conductor sizes less than 1” proceed to Step 4.

Step 3: Rollers are fabricated with a 1” hole and also include cutouts for a 2” or 3” hole located on the inside of each roller. The first groove on each roller represents 2”, and the second groove represents 3”. Cutouts can be easily removed with a utility knife.

Note: Removal of the cutout for a 3” hole will also remove the end snaps. This will not affect the integrity of the product.

Step 4: Locate the “L” bracket (Item C) closest to the point the Critter Line Guard will be protecting. Place this in an “L” shape, with the flat side eventually abutting the outside roller (See Figure 4). Fasten two cable ties directly through the holes provided and around the line or conductor.

Note: Tie straps must be pulled tight to hold product in place.

Step 5: Snap a series of five rollers (Item A) around line. Do not use fewer rollers than indicated. The rollers have a series of 4 snaps, all of which need to be fastened.

Exception: Rollers installed on a line or conductor above 2” will only have two snaps.

Step 6: While assembling the first and last outside rollers, spread apart the wheel and place in front of the four outside snaps on the outside rollers as illustrated in the figure three below. Tightly fasten one cable tie at the base of the wheel also shown in Figure 3.



Figure 3

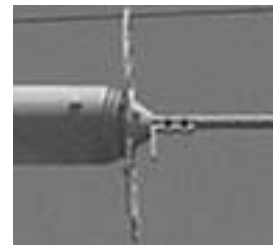


Figure 4

Step 7: Gently push the Critter Line Guard down the line or conductor until it fits snug against the first installed clamp. Fasten the remaining “L” bracket in the same manner as described in Step 4.